

Hong Kong Tatler Homes

June 2018





PROPERTY

NATURE'S WAY
The Carl House is an architectural masterpiece that blends modern design with nature. The house is built into a hillside and features a swimming pool and a fountain. The house is designed by the architect [Name] and is located in [Location].



NATURAL HABITATS

There's more than one way to embrace the environment at home, writes **Richard Harris**

GARDEN REIMAGINED
The rooftop garden at the [Building Name] in London.

More than half the world's population live in cities, yet even as we gather closer in concrete clusters, our desire to be closer to nature increases. This is expressed in a number of ways in the urban environment, such as a push for carbon negative homes that cause minimal damage to the environment, and winter gardens, where we can enjoy greenery all year round whatever the weather.

James Fenner, whose consultancy, Silk Road, helps property developers "rewild" their projects by ensuring greenery features in their designs, says he finds people increasingly want homes connected to nature, not technology. Trees, flowers, grass and bushes are good for people's mental and physical health, he says. "Being close to nature is better for all of us and should be embraced at every opportunity. If not, we'll be surrounded by concrete and screens; Darwin would be appalled."

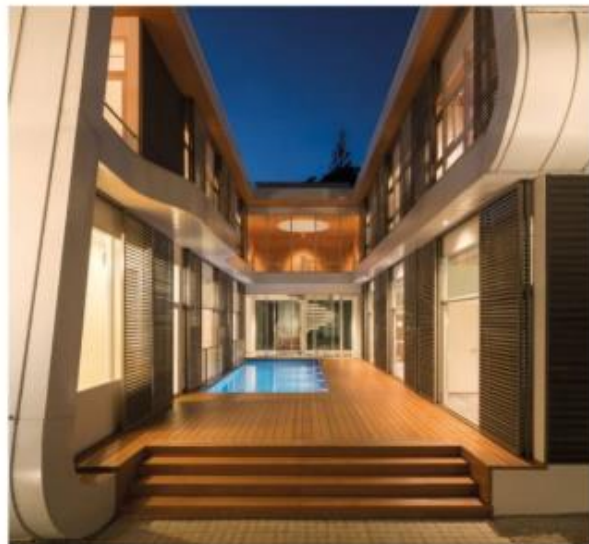


MODERN TWIST
 From top: B House is a reinterpretation of Singapore's colonial "black and white" bungalows; roof overhangs and variable shutters help keep the interiors cool

B HOUSE, SINGAPORE

A reinterpretation of Singapore's much-loved "black and white" colonial bungalows, distinguished by their timbered frames and plastered walls, the B House is a rare and visionary concept inspired by the past. Designed by Singapore's Pomeroy Studio, the detached house is operationally carbon negative, because its solar panels produce more power than the home consumes.

By adopting traditional architectural features, such as roof overhangs and variable shutters, the designers are able to keep interiors cool. The completed building's water-harvesting equipment saves 465 cubic metres of water from needing to be piped into the house from the mains. For its design, the architects were awarded the Building Construction Authority's Green Mark Platinum Award, the highest recognition for environment-friendly buildings in Singapore.



THE CORK HOUSE, LOS ANGELES

Sometimes nature inspires the design of a home. The Cork House features an imported cork tree, a symbol of resilience and intention, planted as the centerpiece of an outdoor entertainment area. The symbolism of the cork tree served as inspiration for the construction of the home, with the single tree integrated into the design early on.

The new detached house features five bedrooms and various entertainment facilities, including a wine/tequila cellar and a projector room beneath the glass-bottomed swimming pool. There is also 5,000sqft of patio space for al fresco dining and watching the sunset. Floor-to-ceiling glazing can be pulled back to create indoor-outdoor spaces, so occupants feel connected to the natural world outside. The US\$28 million property is on sale through Sotheby's International Realty.



THE ULTIMATE TREE HOUSE

From top: The entertaining areas feature floor-to-ceiling glazing that can be pulled back to create indoor-outdoor space; an imported cork tree, planted as a centerpiece for an outdoor area, was integrated into the design from early on; The Cork House features five bedrooms, a glass-bottomed swimming pool and a wine/tequila cellar.

ECO 1, HONG KONG

Hong Kong architect Kevin Chu Yau-wing and his Italian wife, Giulia Dibonaventura, renovated their 1,200sqft Discovery Bay home with rubbish—in their bid to prove that beauty and eco-friendly aren't mutually exclusive concepts. They laid particle porcelain tiles, made from construction waste, in the three-bedroom home, which they've named Eco 1, and used other sustainable materials such as cork to cover bedroom walls. The coffee table was made from bits and pieces collected while beachcombing.

The couple installed house plants to filter the air, and air conditioning is rarely needed because roof insulation helps keep the interiors cool. Solar panels on the roof convert one day of exposure to the sun into 48 hours of lighting. One square metre of the roof is the home's "farm," supplying 60 per cent of the couple's vegetables over a year. Nearby, a wall accommodates a vertical herb garden.



SUSTAINABLE LIVING

From top: The vertical herb garden on the roof; some of the walls around Eco 1 are covered in cork; the floors feature particle porcelain tiles, which were made from construction waste



DINISONAN ISLAND, PHILIPPINES

The purest way to get close to nature is to live right in the middle of it. This private island retreat located off Palawan is just that. The island is a lush tropical haven where residents can enjoy views of the ocean, sunsets and plenty of foliage. An eco-friendly feature of the home is a solar power system and batteries for storage. With coconut trees and other plants on the island, there are plenty of opportunities for foraging.

On the market through Vladi Private Islands for US\$1 million, Dinisonan Island measures 3,000sqm and has a four-bedroom house with 3,200sqft of living space. The island is in a sheltered bay and is 15 minutes by boat from Palawan's Port Barton.



TROPICAL PARADISE
From top: Dinisonan Island is a private retreat located off Palawan and includes a four-bedroom home; the residence comes with 3,200sqft of living space



CITY CHIC
From top: Boscobel Place is a three-storey mews house in Belgravia; the top floor is taken up by a master suite and a winter garden



BOSCOBEL PLACE, LONDON

No garden outdoors? How about creating one indoors? This was the solution at a newly renovated three-storey mews house in Belgravia. A winter garden was installed on the top floor, forming part of a master suite that occupies the whole floor. The garden, with a retractable glass roof that means it effectively becomes a walled garden on warm days, links the master bedroom with its ensuite bathroom. There's also a dressing room.


The bathroom and bedroom have sliding floor-to-ceiling glazing, so occupants can open up all three spaces to form one free-flowing expanse, or close them, still being able to enjoy the view of the winter garden and the light coming in through the glass roof. On sale through Knight Frank for £8.5 million, the freehold house has four bedrooms and two reception rooms.



LANDMARK PINNACLE, LONDON

London is famous for its squares, where communal gardens are bounded by streets of houses whose occupants share these green spaces with each other. An ambitious new development in the heart of London's Docklands plans to create an indoor version of the classic London square.

At Landmark Pinnacle, architects Squire & Partners have included 8,700sqft of indoor garden for residents on the 27th floor of the 75-storey residential tower. The west side is designed as a calm space for relaxation, while the east side is intended as a playful landscape to ignite the imagination of children.

A roof terrace with 360-degree views crowns the building, taking in sights such as the O2 arena and Canary Wharf. The premium homes have three bedrooms and are on sale through Knight Frank for £1,486,250. 

LONDON CALLING
From top. The Landmark Pinnacle has an indoor garden on the 27th floor, where the east side is designed as a play area for children, the west side of the indoor garden is for rest and relaxation, the roof terrace on the 75th floor comes with panoramic views of the city